

4.0mm Two-way WiFi Video Inscope

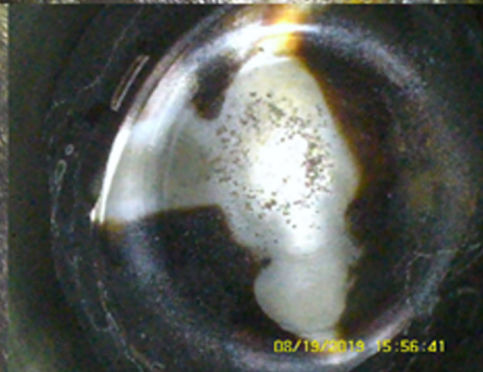
SZY401T

Model	SZY401T
External diameter	∅4mm
Probe length	16 mm
Pixel point	One megapixel pixels
View field angle	120°
Deep scenery	10-80 mm
Light source	LED light source
Observations	Front view
Insert pipe material	Stainless steel woven belt
Bend Angle (top / bottom)	180°
Insert tube length	The standard length is 1 m



Operating temperature of the host system	-10°C ~ 50°C, LCD panel must be heated below 0°C	Relative humidity	Maximum of 90%, with no condensation
Operating temperature of the video probe	-20°C ~ 60°C, below 0°C should reduce boot operations	Waterproof	Probes and objective lenses can withstand IP67 waterproof
Storage temperature	-20°C ~ 60°C		

Joystick control and direction	Two-direction steering	Fixed position	Fixed internal resistance
Directive angle	One-side > 90°	Boot distance and length	Standard 1 m
Axial control	180° axial rotation	Insert the tube	4-Floor steel wire woven pipe
System weight	Complete equipment including chassis: 5 kg bare machine: <1 kg	Host size	14.5 cm X 10.5 cm X 4.5 cm
Power supply	Lithium battery: 3.7V, 4200 maH	Structural materials	Plastic PC housing
LCD screen	Bright 4.5-inch active matrix color LCD display	Tuning	Manual adjustment
Data I / O port	USB2.0 port, WiFi wireless connection	Memory	16G High-Speed SD Card
Keybutton function	Menu operations, videos, photos, snap	White balance	Automatic white balance
Image function	Image mirror, zoom, preview	Language support	Support for 12 countries



LINE : @ITOKIN2000.COM
 TEL : 02-9744354-6
 EMAIL : SALESITOKIN@GMAIL.COM